

Hopewell Valley Regional School District

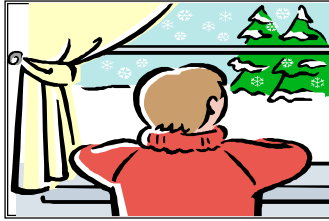
Guide to Emergency Schedule Changes

Emergency Information

Information about emergency school closings, delayed openings, or early dismissals will be found in the following places. In addition, everyone who has signed up for the district's emergency e-mail list through the district's web site will be notified.

District Web Site	www.hvrtd.k12.nj.us
District TV Channel	Channel 19
District Emergency Phone Line	737-8449
Television	Channels 5, 6, 7 and 10 News 12 New Jersey
Radio	WPST (97.5 FM) WBUD (1260 AM) & WKXW (101.5 FM)

Schools Closed



When school are closed due to weather related road conditions or other emergency situations, that information will be on all of the sites listed above in addition to being e-mailed to those who have signed up through the district web site to receive these notices.

Delayed Opening

When there is a delayed opening, schools will open **90 minutes** later than normal. Buses will be running their routes approximately 90 minutes later. The bus for afternoon kindergarten students will run 30 minutes later than usual.

Pre-school	A.M. session canceled	P.M. session 12:30-3:00 p.m.
Kindergarten	10:15 a.m. -12:45 p.m.	P.M. session 1:00 p.m. - 3:30 p.m.
Grades 1- 5	10:15 a.m. - 3:30 p.m.	
Grades 6-12	9:15 a.m. - 2:45 p.m.	

Early Closing

When schools close earlier than the normal time, we will use the following dismissal schedule. Elementary students will not be released if parents, guardians or emergency contacts have not been reached by phone.

Grades 1-5 1:00 p.m.

Kindergarten

PM Kindergarten and pre-school sessions canceled

AM Kindergarten bus students will be released at 1:00 p.m. with other students and will be dropped off where they are picked up in the morning.

AM Kindergarten walkers will be released at 1:00 p.m. to walk with other students or parents may go to the school office to pick their students up after 11.45 a.m.

AM Kindergarten students who attend after-school programs either held in our school buildings or off site locations will go to their programs if the programs are open. If these organizations opt to close, parents will be responsible for picking up the students.